

INSTALLATION MANUAL

MOUNT, TRUCK, M36

For Installation on

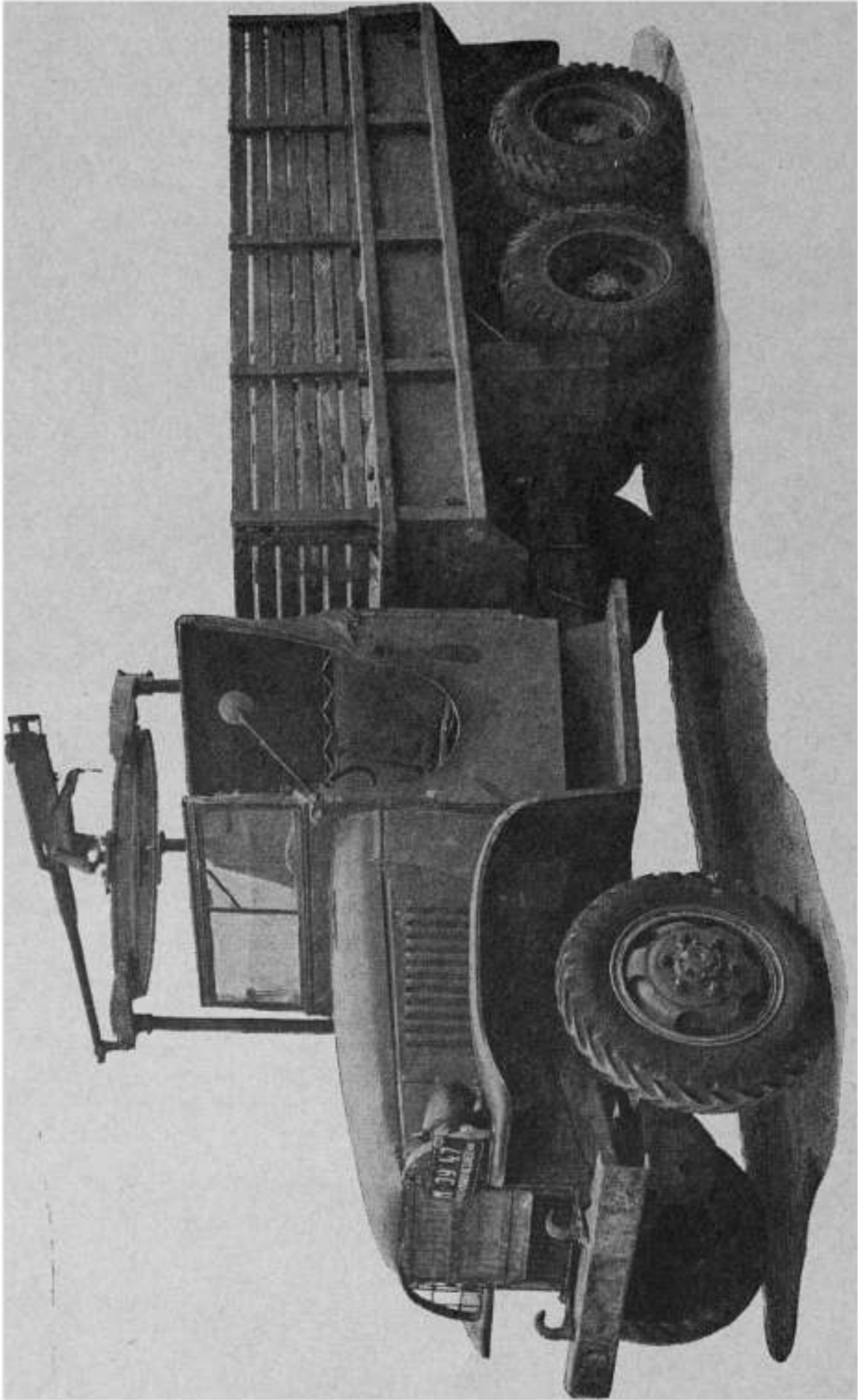
OPEN CAB

**TRUCKS, PRIME MOVERS, TRACTORS,
WRECKERS and OTHER VEHICLES**

Preliminary Edition

April 10, 1943

TRACKSON COMPANY
MILWAUKEE, WISCONSIN, U. S. A.



G.M.C. — 2½ TON, 6 x 6, UNIVERSAL OPEN CAB TRUCK

I M P O R T A N T

READ THESE INSTRUCTIONS BEFORE FURTHER UNPACKING AND THEN FOLLOW THEM STEP BY STEP AS OUTLINED.

Do not unpack other box and cartons until contents are actually required. By following the sequence of operations outlined in this Installation Manual, the entire Mount can be installed with a minimum of time and effort.

As presently shipped herewith, the Structural Supports included in the box (Box 2) with these instructions have not yet had Ordnance Drawing Numbers assigned to them, and reference is therefore made to Manufacturer's Numbers.

These supports are applicable to the following vehicles:

- 2½ ton, 6 x 6, G.M.C., L.W.B., open cab Truck.
- 2½ ton, 6 x 6, G.M.C., S.W.B., open cab Truck.
- 2½ ton, 6 x 6, G.M.C., C.O.E., open cab Truck.
- 2½ ton, 6 x 6, G.M.C., Amphibian Truck.
- 2½ ton, 6 x 6, STUDEBAKER, open cab Truck.
- 4 ton, 6 x 6, DIAMOND-T, open cab Truck.
- 4 ton, 6 x 6, DIAMOND-T, L.W.B., open cab Truck.
- 4 ton, 6 x 6, DIAMOND-T, open cab Wrecker.
- 4-5 ton, 4 x 4, FEDERAL, open cab Tractor.
- 4-5 ton, 4 x 4, AUTOCAR, open cab Tractor.
- 5-6 ton, 4 x 4, AUTOCAR, open cab Tractor.
- 6 ton, 6 x 6, WHITE, open cab Prime Mover.
- 6 ton, 6 x 6, CORBITT, open cab Prime Mover.
- 7½ ton, 6 x 6, MACK, open cab Prime Mover.

Certain views of some of the above vehicles with Truck Mount, M36, installed are imprinted on cover pages. Where instructions refer to right hand and left hand sides of truck, in each case the right or left side is determined as when sitting in driver's seat.

The complete Mount is packed for shipment in two boxes. The other box, referred to on the Packing List as Box 1, contains the Carriage Track; Carriage Assembly; Cradle Assembly; Ammunition Tray; and Gun Mount Cover. Only the Carriage Track will be required in connection with the installation of the Structural Supports and it is suggested, therefore, that the cartons in Box 1 containing the assemblies be opened only after the Supports and Track are in place.

The wrenches and tools which are regularly supplied with the vehicle are sufficient for this installation work, except that on some vehicles a 13/32" drill for the 3/8" Front Post Pin and a back saw for shortening the Front Post may be required as hereinafter outlined.

INSTALLATION SEQUENCE

The general sequence of installation should be as follows:

1. Assembly of Brackets on Supporting Posts.
2. Installation of Rear Post Assemblies on Truck Body.
3. Installation of Adapter Plate, Carriage Track and Front Post Assembly.
4. Installation of Gun Barrel Clamp Assembly.
5. Installation of Carriage and Cradle Assemblies.
6. Installation of Ammunition Tray.
7. Installation of Gun and Gun Cover.

PACKING LIST

for

ONE TRUCK MOUNT, M36

Each complete Truck Mount, M36, is packed in two boxes. This Box 2 contains the structural supports consisting of the three supporting posts and arm assemblies, and Box 1 contains all other assemblies and parts required for the complete Mount.

This Mount is packed in accordance with Ordnance Packaging Specifications and suitable for Export Shipment. It is suggested that the boxes remain unopened until actual installation on truck is to be made.

IMPORTANT !

An INSTALLATION MANUAL and Packing List is contained in a waterproof Envelope A packed inside of Carton G in this box. The contents of Box 1 will not be required until the supports have been installed on the truck, and it is suggested therefore that this Box 2 be opened first and the Installation Manual removed from the envelope. This Installation Manual gives all necessary instructions for assembling Mount on various sizes of "cabless" trucks. READ INSTALLATION MANUAL CAREFULLY BEFORE BEGINNING INSTALLATION AND BEFORE UNPACKING CONTENTS OF BOX 1.

CONTENTS OF THIS BOX (BOX 2)

	Quan.	Part No.	Description
CARTON G.	1		Envelope A
	1	C106435	Clamp Assembly, Mount
	1	G120	Adapter Plate
	1	G164	Pin, Post, Front
	2	BFAX1CE	Pin, Cotter, 3/32" x 3/4"
	6	BCBX2BK	Screw, Cap, Hex. Hd., 5/8"-18 NF-2 x 3" lg.
	6	BBSX4AG	Nut, Safety, 5/8"-18 NF-3
	16	BCBX1EF	Screw, Cap, Hex. Hd., 1/2"-20 NF-2 x 1 3/4" long
	16	BBSX4AE	Nut, Safety, 1/2"-20 NF-3
	32	G121	Washer
OTHER CONTENTS:	1	G118	Bracket, Front, with lug for gun barrel clamp
	1	G117	Bracket, Right Rear
	1	G119	Bracket, Left Rear
	1	G163	Post, Support, Front
	2	G161	Post, Support, Rear

CONTENTS OF OTHER BOX (BOX 1)

	Quan.	Ord. No.	Description
CARTON C.	1	D40721	Carriage, Assembly
CARTON D.	1	D40733	Cradle, Assembly
CARTON E.	1	D40731	Tray, Ammunition, Assembly
OTHER CONTENTS:	1	C90771	Track, Carriage, Assembly
	1	D40726	Cover, Mount

ASSEMBLY OF BRACKETS ON SUPPORTING POSTS

Plate 1 on Page Four illustrates all the items packed with the Structural Supports for Truck Mount, M36. Bracket G118, with the two projecting Gun Barrel Clamp supporting lugs, is assembled in every case on the top of the longest tubular Supporting Post — the one with a series of six holes drilled into same. The top end of this Post can be determined from the dimension shown on Plate 1, and also from the fact that the series of holes are located nearer the bottom of the Post.

The other two (shorter) tubular Supporting Posts, G161, are exactly alike and to these Brackets G117 and G119 are to be assembled at the top end. The top of these Posts can again be determined from the dimension shown on Plate 1 and also from the fact that the series of seven small step projections, for adjusting Posts to proper height on the vehicle, are located nearer the bottom of each Post.

Six $\frac{5}{8}$ " Clamp Screws, BCBX2BH, and Safety Nuts, BBSX4AG, are supplied for clamping the three Brackets in place. Be sure that the end of the tubular post in each case contacts the underside of the projecting lip of the Bracket casting. If Post will not readily slip into Bracket bore, then drive a wedge between clamp lugs of Bracket to permit easy assembly. Twist the Post so that holes in Front Post and lugs on Rear Post are in approximate relation to Bracket clamp lugs as shown in Plate 1. Insert screws and install nuts and **draw up only lightly at this time.**

INSTALLATION OF REAR POST ASSEMBLIES

Each "cabless" vehicle listed herein has built-in clamp sockets toward the right front and rear of seats for the installation of the Post Assemblies. The rear clamp sockets are at different locations with respect to the front right socket on various vehicles as indicated by the symbols shown on Plate 1 and as further illustrated on Plate 2. In each case the Rear Post with Bracket G117 is to be installed in the right rear socket, Rear Post with Bracket G119 in the left rear socket and Front Post with Bracket G118 in the front socket.

Loosen clamps on all sockets and install the two rear Post Assemblies with the projecting lugs in a position to give maximum support for the Posts. The series of seven lugs at 2" spacing are for the purpose of adjusting the height of the Mount as required to fit the particular vehicle and the height of the gunner. Select a lug which appears to give the desired height, being sure that this is the same one in the series on both Rear Posts, and then clamp the Posts in place on the truck body. As installation proceeds, or when Mount is completely assembled, it may be desirable or necessary to raise or lower the Posts from the first chosen location.

ASSEMBLY OF ADAPTER PLATE ON CARRIAGE TRACK

Open Box 1 and remove Carriage Track C90771. **Do not remove tag** attached to this Track for the time being, as this serves to identify the track supporting lug which is to be located near the front of vehicle. These lugs on the track are not equally spaced apart. The longest distance between the lugs, as indicated on Plate 1, should be towards rear of vehicle **with the $2\frac{1}{8}$ " dimension to lug face from top of track as shown.** After unwrapping Carriage Track and removing heavy rust-inhibiting compound with a suitable solvent, such as gasoline or naphtha, and then